

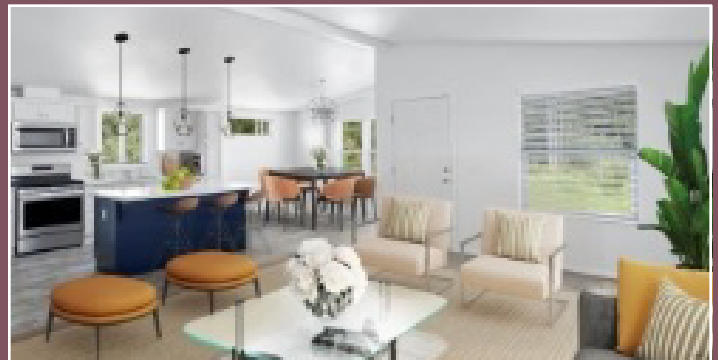


WESTWOOD  
VILLAGE

Reserve Your  
Dream Home  
Today



Welcome Home

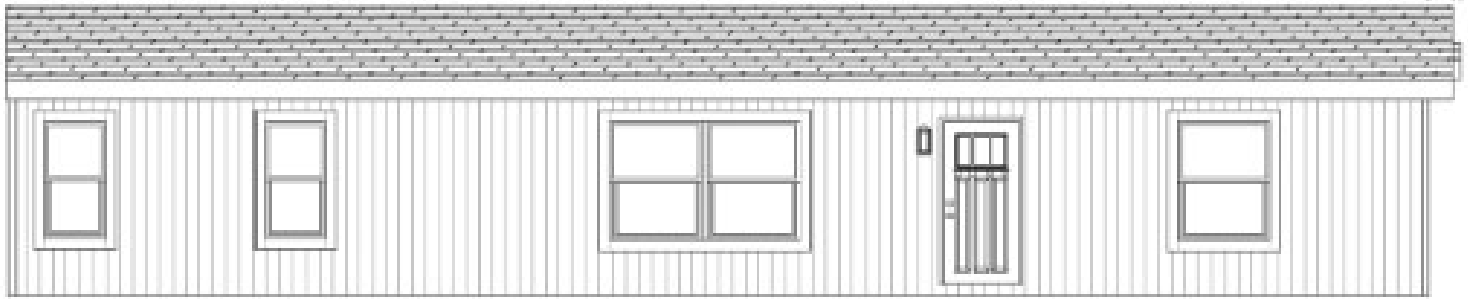


# The Redwood

## New Skyline Homes only \$111,995<sup>+tax</sup>

3 Bedroom, 2 Bath, 1/2 porch, 1608 sq ft

Price Includes: Set-up • A/C & Heat • Carport • Skirting • Driveway



LEFT



**Limited lots remain.**

Secure yours NOW with a \$5,000 fully refundable deposit!

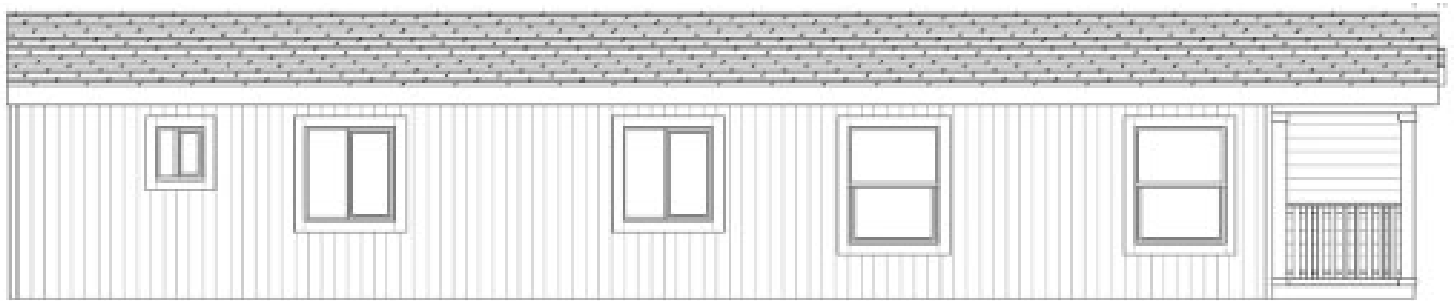
Dealer Name: Legacy MHRV Sales  
Manufacture: Skyline  
Year: 2023 Model: Redwood: H200-C  
Serial Number: New Home

# The Westwood

## New Skyline Homes only \$116,995<sup>+tax</sup>

3 Bedroom, 2 Bath, 1/2 porch, 1608 sq ft

Price Includes: Set-up • A/C & Heat • Carport • Skirting • Driveway



LEFT



**Limited lots remain.**

Secure yours NOW with a \$5,000 fully refundable deposit!

Dealer Name: Legacy MHRV Sales  
Manufacture: Skyline  
Year: 2023 Model: Westwood: H201-C  
Serial Number: New Home

# Fun & Easy Standard Features

## Construction Features

- 9' Sidewalls with Flat Ceiling
- 2X6 Floor Joists
- 2X4 Exterior Sidewalls
- R33 Ceiling Insulation
- R11 Wall Insulation
- R11 Floor Insulation
- 201b Roof Load
- 3:12 Roof Pitch
- Tongue and Groove OSB Floor Decking
- Dual-Glazed Vinyl Framed Low-E Windows
- Steel Outriggers on Exterior Walls

## Exterior Features

- Upgrade Exterior on Hitch End
- Vertical Cement Fiber Siding on Balance
- Class "A" Architectural Roof Shingles
- 2x6 Exterior Window Trim Throughout
- Exterior light at Front and Rear Doors
- 36" Craftsman Front Door with Deadbolt
- 32" Cottage Rear Door with Deadbolt
- 12" Front Overhang
- 6" Side Eaves (Per Plan)
- Semi-Gloss Exterior Paint
- Large Living Room and Dining Room Windows

## Interior Features

- W' Tape and Texture Drywall Throughout
- Hand-Finished Knock-Down Wall Texture
- Low Sheen Interior Paint
- 3-1/4" Sculptured Floor Molding
- 2-Panel Interior Doors with 3-Mortised Hinges
- 2-Panel Utility Room Passage Door with Air Grill
- 2-Panel Furnace Door with Drywall Backer
- Satin Nickel Lever Door Handles
- Shaw Carpet
- 3/8" Rebond Carpet Pad
- Congoleum\* Diamondflor Vinyl Flooring in Kitchen, Dining Room, Baths and Utility
- 2" Faux Wood Blinds with Faux Wood Valance
- Double Wood Shelf & Pole in Master Bedroom Closet
- Single Wood Shelf and Pole in Guest Bedroom Closets
- Wood Shelving in Hall Closet and Linen Closets
- Wood Shelf and Pole Above Washer/Dryer Area
- Toe Kick Registers in Kitchen and Baths

## Kitchen Features

- Hardwood Shaker Style Cabinets
- 42" Tall Overhead Cabinets Kitchen
- 24" Deep Refrigerator Overhead Cabinet 3/4" Adjustable Base and Overhead Shelves
- Drawer Over Door Construction
- Bank of Drawers
- Granite Countertop with Self Edge
- 4" Granite Backsplash
- Large Gourmet Island with 2-Large Drawer Banks
- Pantry with 4-18" Deep Shelves
- Full Extension Ball Bearing Drawer Guides
- Whirlpool\* Stainless Steel Appliances
  - 25 Cu. Ft. Side-By-Side Refrigerator
  - 30" Self-Cleaning Gas Range
  - 30" Microwave Range Hood
  - Dishwasher
- Deep Undermount Stainless Steel Sink
- High Arch Single Lever Faucet with Pullout Sprayer with Chrome Finish

## Electrical/ Heating/ Plumbing

- 100 AMP Exterior Electrical Panel Box
- G.F.I. Protected Outlets in Kitchen and Baths
- PEX Water Lines
- Shut Off Values at Sinks and Toilets
- Exterior G.F.I. Protected Outlet
- USB Receptacle in Kitchen Area
- Smoke Detectors with Battery Back-Up
- Switch Wall Outlet in Living Room and Bedrooms
- Recessed LED Can Lights
- Dining Room Chandelier
- Silent Rocker Light Switches
- Fan Prep Living Room and Master Bedroom
- 3-Way Switch in Hall and Utility Room
- 40-Gallon Gas Water Heater
- Down Flow Gas Furnace
- Manual Thermostat
- Plumb for Icemaker
- Plumb for Washer
- Prep for Gas Dryer
- Recessed Dryer Vent Box

## Master Bath

- 60" Fiberglass Walk-in Shower
- Obscure Shower Enclosure
- China Self Rimming Sink with Overflow and Pop-Up Drain
- Single Lever Shower Value with Chrome Finish Single Lever Faucets with Chrome Finish
- Elongated Water-Saver Commode
- Vanity Light Fixture
- Vanity Mirror with Beveled Edge
- Ceiling Exhaust Fan with Light
- 36" High Countertop
- Laminate Countertop
- Laminate Crescent Edge
- 6" Laminate Backsplash
- (2) Drawer Banks
- Full Extension Ball Bearing Drawer Guides
- Linen Closet with 4-18" Deep Shelves
- Ventilation Window
- Towel Bar and Tissue Holder
- Privacy Lock

## Hall Bath

- 60" One-Piece Fiberglass Tub/ Shower
- China Self Rimming Sink with Overflow and Pop-Up Drain
- Single Lever Tub/Shower Diverter with Chrome Finish
- Single Lever Faucets with Chrome Finish
- Elongated Water-Saver Commode
- Vanity Light Fixture
- Vanity Mirror with Beveled Edge
- Ceiling Exhaust Fan with Light
- 36" High Countertop
- Laminate Countertop
- Laminate Crescent Edge
- 6" Laminate Backsplash
- Ventilation Window
- Towel Bar and Tissue Holder
- Privacy Lock